

Aberdeen Cross City Transport Connections

Purpose of Study

Aberdeen City Council (ACC) along with Aberdeenshire Council (AC), Nestrans and Transport Scotland have commissioned the consultant team of SIAS, Peter Brett Associates (PBA) and Energised Environments (EE) to undertake an appraisal of sustainable transport connections between a number of planned sites in Aberdeen and Aberdeenshire.

The overall purpose of the study is *to maximise the sustainable transport based accessibility associated with the development sites*. The study will consider the provision of appropriate public transport and active travel (walking and cycling) connections:

- Between the planned residential and employment development sites;
- Between the planned residential and employment development sites and key existing residential areas and employment centres; and
- Between the different modes of sustainable transport at key interchange points.

Work to Date

The study is being undertaken in line with the Scottish Transport Appraisal Guidance (STAG). STAG comprises 4 stages: Pre-Appraisal; Part 1 Appraisal; Part 2 Appraisal; and Post Appraisal. The STAG approach is required in all cases where government funding, support or approval to change the transport system is sought. The study is currently in the Pre-Appraisal stage and a range of activities have been undertaken to date, including:

- Detailed reviews of the existing and future public transport and active travel network to inform the identification of **Problems, Opportunities, Issues and Constraints**;
- The development of **Transport Planning Objectives** for the study; and
- The development of a series of **Public Transport and Active Travel Options**.

There is already a large number of existing active travel routes (including Core Paths, dual use facilities, and on-road cycle provision etc.) which connect to the development sites. As such, rather than developing entire new routes between pairs of sites, the **active travel options** that have been developed are largely concerned with:

- Filling in 'missing links' in existing routes so as to provide continuous connections; and/or
- Upgrading an existing route to a level considered suitable for commuters.

In developing the **active travel options**, the provision of / upgrades to the following have been considered:

- Signage
- Pedestrian footways
- On-road cycle routes
- Shared use footways
- Shared use footpaths
- Crossing facilities

Consideration has also been given to national guidance on acceptable walking and cycling distances and key environmental designations in the area.

Purpose of Today

The purpose of today's 'drop-in' session is to gain your feedback on the range of active travel options developed, as well as gathering any further suggestions for improvement.

The following maps show:

- The active travel options developed (Figure 1)
- The envisaged active travel routes between the development sites and employment areas (based on a combination of the options and existing infrastructure) (Figure 2)

Large scale maps (of the two maps contained within this pack) are available in the session for you to post comments on relating to specific routes or the network as a whole. We would ask you to provide comments by writing on the available post-it notes and sticking them to the maps appropriately.

Option route descriptions and comments on the routes can also be found in the available material set out in this session. If you would like to receive the material electronically, please provide your email address to one of the team.

Please also consider and provide your feedback on the following:

- Do you believe the routes are appropriate and would encourage commuting use?
- Are the routes sufficiently direct?
- Do you have any safety concerns in relation to the routes?
- Do you think user conflict on any of the routes would be an issue i.e. between walkers/cyclists/horse-riders?
- Are there any further routes that you believe should be considered?

Representatives from Aberdeen City Council, Aberdeenshire Council, Nestrans, and the consultant team are available to answer any questions you may have.

Next Steps

The active travel options developed will be updated in light of the information collected during this drop-in session. The next stage of work is the STAG Part 1 Appraisal. This stage involves an assessment of the options developed during Pre-Appraisal against the:

- Transport Planning Objectives
- STAG Criteria
- Established Policy Directives
- Feasibility, Affordability, and Public Acceptability

If you have any further comments, these can be provided directly to this dedicated email address: crosscitytransport@peterbrett.com

Many thanks for attending today. We really appreciate your input in shaping the future travel network in and around Aberdeen.

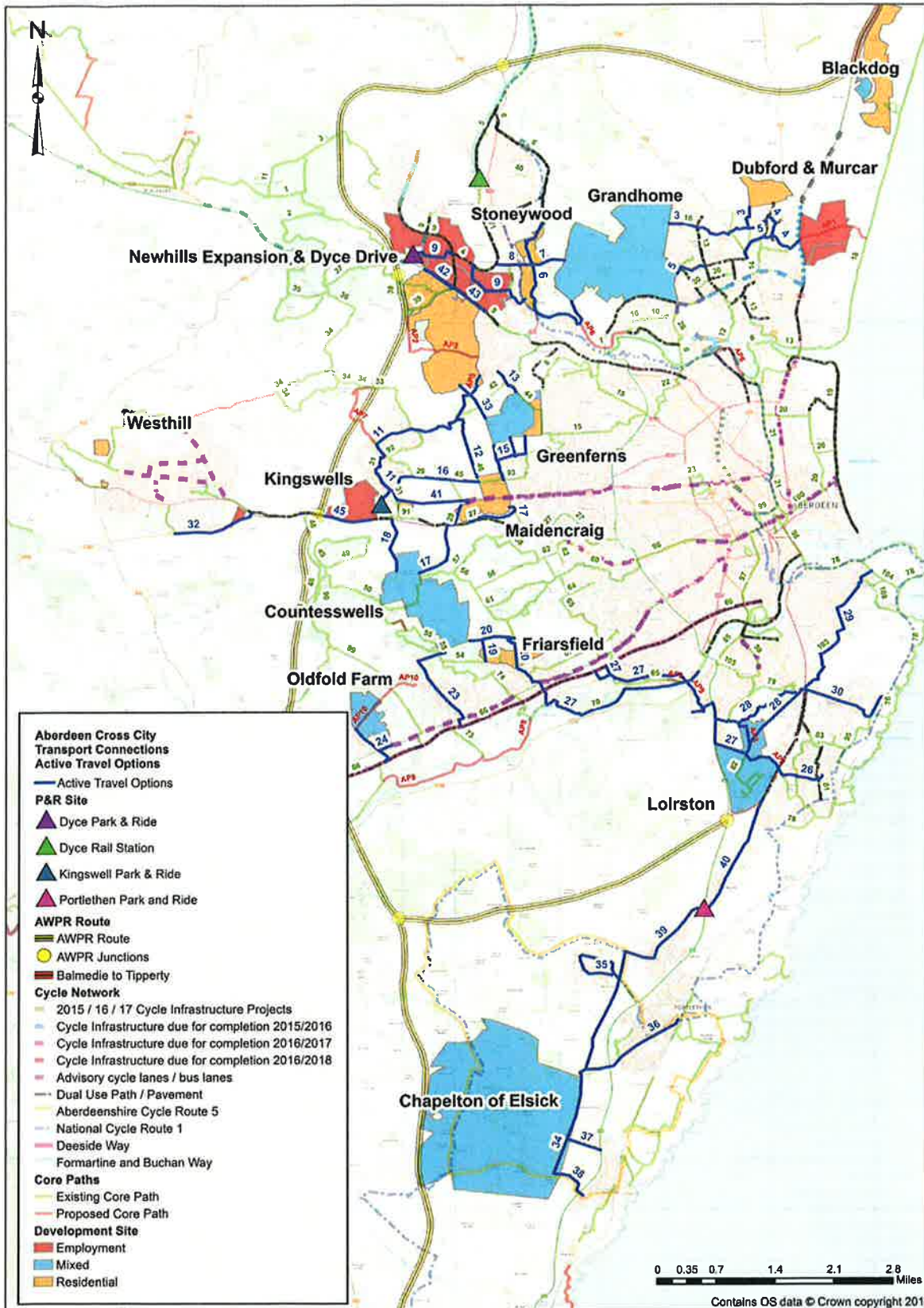


Figure 1: Active Travel Options Map

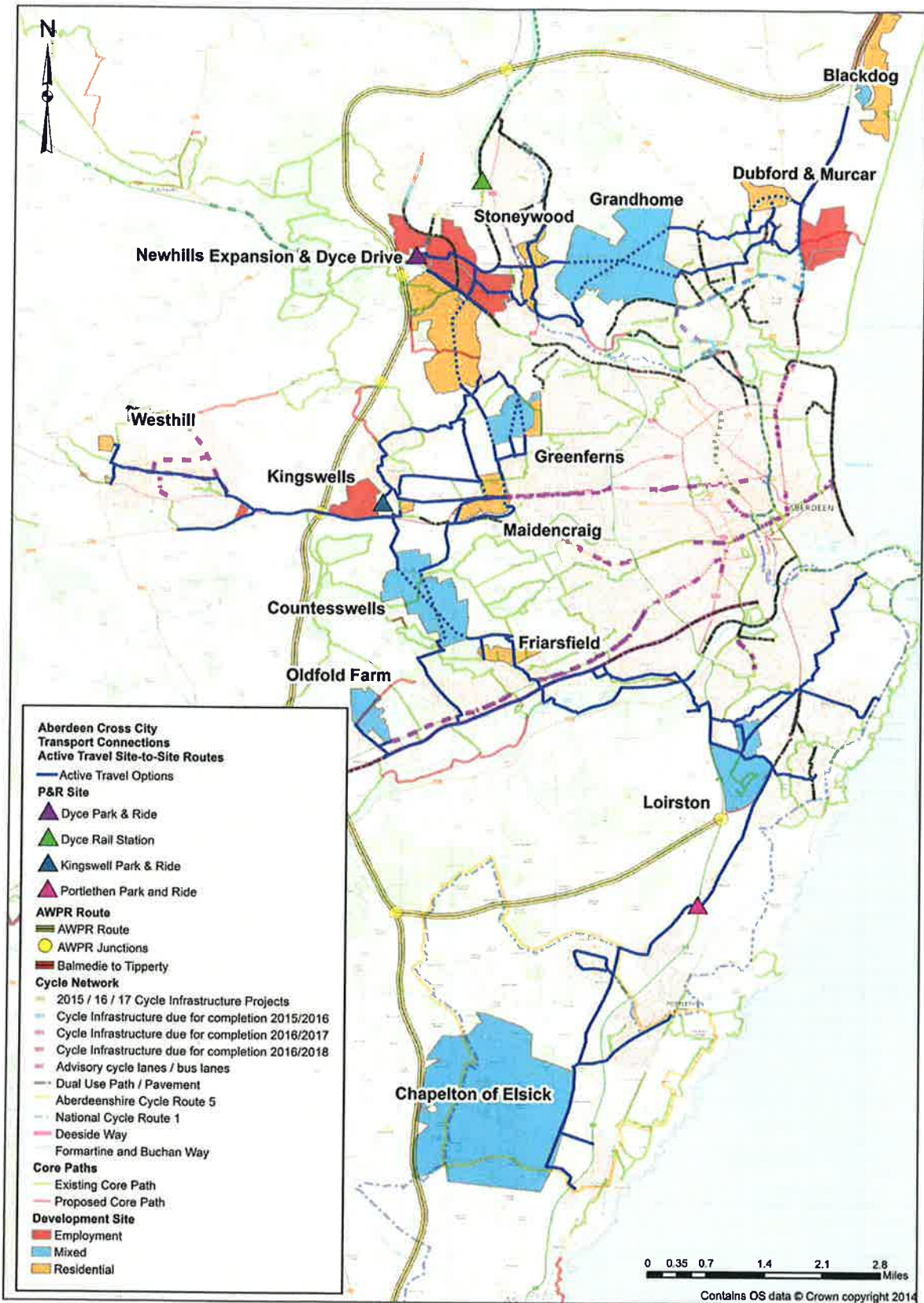


Figure 2: Active Travel Site-to-site Connections Map (based on a combination of the options and existing infrastructure)